



Otsego Electric Cooperative, Inc.

A Touchstone Energy® Cooperative 



THE OEC CURRENT

People You Can Count On

www.otsegoec.coop

June 2010

Stephen Rinell
CEO

Board of Directors
Gary Potter
President

Charles Arnold
Vice President

Wendell Saunders
Treasurer

Steve Child
Secretary

Roger Erway
Director

Fred Braun, Jr.
Director

Edward Clarke
Director

Kathleen Del Plato
Director

Right-of-Way Clearing

Members who have property along Otsego Electric Cooperative (OEC) power line routes occasionally need our brush crew personnel to trim trees in order to eliminate reliability concerns with power lines. Our preventive maintenance includes, but is not limited to, cutting of brush and undergrowth as well as the trimming of trees that might grow up and cause problems with electric distribution lines.

We recommend, and try to maintain, a minimum of a 15 foot clearance on all sides of our center conductor or pole line. For everyone's safety, please refrain from planting trees and shrubs within 15 feet of all utility lines and equipment. It is important to not plant trees or build structures directly under power lines. Trees and other structures in the rights-of-way can interfere with our ability to supply safe, reliable power.

Keeping the OEC rights-of-way clear will help our line workers access the lines more effectively which will help us facilitate more timely maintenance and repairs. The Cooperative's right-of-way maintenance program is in place to help minimize the extent of power outages and the resulting inconveniences to you, the Cooperative member.

Electric Water Heater
Switches Installed:
677
May Savings: \$2,004
Total 2010 Savings:
\$9,471

Somewhere in the body of this newsletter there is a service map location number, your map location number is located on your bill. If you find your map location number in this newsletter call the office within 15 days and your account will be credited \$25.

Office Hours
7:30am –
4:30pm
Monday – Friday
Phone:
607-293-6622

After
Hours/Outages:
1-866-591-3192



Otsego Electric Cooperative would like to ask the public to not place signs or other objects on power poles, doing so creates a dangerous situation for our line workers.

Attachments not belonging to the Co-op or other authorized utilities will be removed by our line personnel.

The Otsego Electric Co-op office will be closed Monday July 5th, for the 4th of July weekend.



July 2010 Rates

It is Otsego Electric Cooperatives goal to pass along pricing information to our members in a timely manner. That's why we posted our July rate changes in the April and May newsletter. Typically, a planned increase like this allows more time to tell members when a price increase can be expected.

Occasionally, unplanned increases due to factors such as rising fuel prices, increases in purchased power costs, increased demand during peak generation periods, and power interruptions due to repairing and rebuilding lines due to storm damage sometimes give us less time to communicate rate changes.

Otsego Electric Cooperative offers a number of options to help members manage their power bills. Some of those services that our members find valuable are our automatic payment options, and budget billing programs. To learn more about these programs call our office at 607-293-6622.



Residential

	Old Rate	New Rate
Customer Charge	\$11.00 (late \$11.17)	\$20.00 (late \$20.30)
All kWh, per kWh Charge	\$.08728 (late \$.08859)	\$.08728 (late \$.08859)
Right-of-Way Improvement Rider	\$1.83	No Charge

Small Commercial

	Old Rate	New Rate
Customer Charge	\$12.00 (late \$12.18)	\$25.00 (Late \$25.38)
All kWh, per kWh Charge	\$.08592 (late \$.087209)	\$.08592 (late \$.087209)
Right-of-Way Improvement Rider	\$1.83	No Charge

Single Phase in Excess of 25 kVa

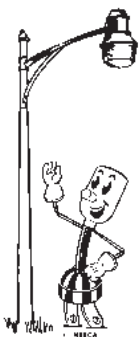
	Old Rate	New Rate
Demand Charge	\$6.50 (late \$6.60)	\$7.00 (Late \$7.11)
Energy Charge		
All kWh, per kWh Charge	\$.064640 (late \$.065610)	\$.07(ate \$.07105)
Right-of-Way Improvement Rider	\$1.83	No Charge

Three Phase or Multi-Phase Accounts

	Old Rate	New Rate
Demand Charge	\$6.50 (late \$6.60)	\$7.00 (Late \$7.11)
Energy Charge		
All kWh, per kWh Charge	\$.075320 (late \$.0764498)	\$.081(ate \$.0822)
Right-of-Way Improvement Rider	\$1.83	No Charge

*PPA Charges apply to all rates

LED Light Exchanges

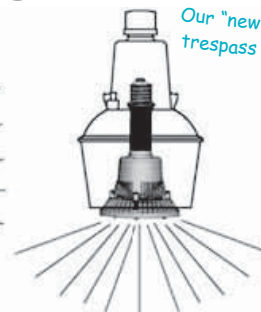


Light shinning up is wasted light—which is wasted energy.

Otsego Electric Cooperative is currently installing LED lighting in place of our mercury vapor area lights (security lights). LED'S are the most efficient, environmentally responsible light we have found. The light we have chosen also allows us to use our existing fixtures, while bypassing the mercury vapor ballast.



Old Style Light



New Style Light

Our "new style" light minimizes light trespass on neighboring properties.



Call the Co-op office at 607-293-6622 for info about the \$2 monthly credit for being in the **Load Switch Energy Saver Program.**



Marathon[®]

WATER HEATERS



Contact our office, at 607-293-6622, to find out about member discounts on energy efficient **Marathon** electric water heaters.



We have many sizes to choose from.

Look at all the insulation



**Know what's below.
Call before you dig.**

With summer here many people are involved with outdoor projects that require digging, for example planting trees and landscaping. There is a new federally-mandated "call before you dig" number. It's a good idea to call 811 to get underground utilities marked before starting projects that require digging to avoid undesired consequences. You can also call *Dig Safely. New York* at 1-800-962-7962 to have utility lines marked.

Washington, D.C. Trip



Photo by Lori V. Grace

Approximately 3,000 electric cooperative leaders from around the United States visited Washington, D.C., May 4-6 for a legislative conference sponsored by the National Rural Electric Cooperative Association.

Representatives from over 300 electric cooperatives visited the Capitol Hill offices during the conference. Topics like renewable energy and energy efficiency were discussed with members of Congress.

Stephen Rinell, CEO of the Otsego Electric Cooperative, with Congressman Michael Arcuri and Unadilla Valley Central School student Abby Grace, on a recent visit to Washington, D.C. for the National Rural Electrical Cooperative Association's legislative and lobbying session.



Otsego Electric Cooperative, Inc.

66th Annual Meeting

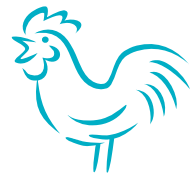
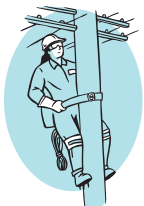
Wednesday, August 18, 2010

The Annual Meeting of the Members is the most important day of the year for your cooperative. This year's Annual Meeting will be held at the Milford Central School, Wednesday, August 18, 2010. Milford Central School is located at 42 West Main Street, in the Village of Milford.

The ever-popular Brooks' House of Bar-B-Q chicken will be served between **5:00** and **6:30 P.M.**, with the business meeting starting promptly at **7:00 P.M.**

Please complete and return the coupon below, along with the \$5.00 per dinner payment. Please make your check payable to Otsego Electric Cooperative. **Do not include this in your check for payment of your electric bill.** No tickets will be sold at the meeting. Members not wishing to attend the Bar-B-Q are encouraged to attend the business meeting and take part in the election of Directors and other business matters.

16-20-05-17-NL



66th Annual Meeting - Brooks' Chicken Bar-B-Q

\$5.00 Per Serving

Enclosed Please Find \$ _____

Please Reserve _____ Tickets at \$5.00 Each (*No takeouts.*)

Name _____

(Otsego Electric Cooperative Members and Family Only Please)

Cut out the coupon above and send it in by August 11th if you plan on attending Otsego Electric Cooperative's 66th Annual Meeting.